

# The Uptown Plaza

Dade City, FL

PRIME FRONTAGE RETAIL SHOPS

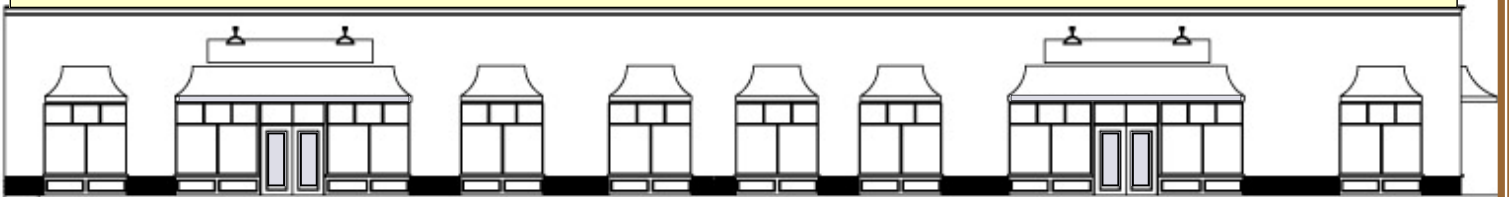
All New Lighting ~ Paved Front and Rear Parking Lots



## ~AVAILABLE RETAIL UNITS~

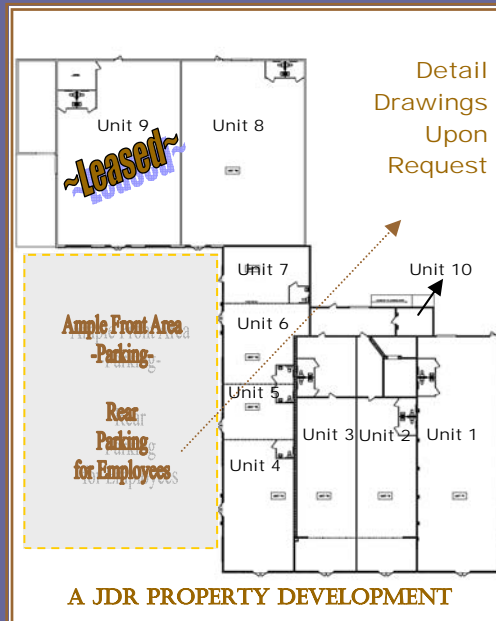
- |                     |            |                     |            |
|---------------------|------------|---------------------|------------|
| • Unit 1 - 3,333 SF | \$3,900.00 | • Unit 5 - 702 SF   | \$ 950.00  |
| • Unit 2 - 2,488 SF | \$2,900.00 | • Unit 6 - 1,095 SF | \$1,450.00 |
| • Unit 3 - 2,436 SF | \$2,850.00 | • Unit 7 - 880 SF   | \$1,150.00 |
| • Unit 4 - 1,690 SF | \$2,150.00 | • Unit 8 - 4,070 SF | \$4,400.00 |
| Unit 10- 169 SF     |            | \$275.00            |            |

Above prices are per month—ALL Costs included—Property Taxes, Building Insurance and CAM (Common Area Maintenance) general sales tax additional, above prices are for the 1st year of agreeable lease, prices effective Sep.-Oct. 2007 and are subject to change.



## Features:

- 169 to 4,070 SF retail units available for LEASE
- Common areas & bathrooms finished
- Large perimeter windows with great views
- 5.0 per 1,000 parking
- Just east of the Downtown Shopping District



## The Uptown Plaza

Dade City, Florida

From 169 SF to 4,070 SF  
9 Available Units  
Excellent frontage on 7th St.  
Blocks from Downtown

For Information, contact:  
Joe Kennedy  
Property Development Office

**352-567-0600**

[jkennedy@DCBusinesscenter.com](mailto:jkennedy@DCBusinesscenter.com)